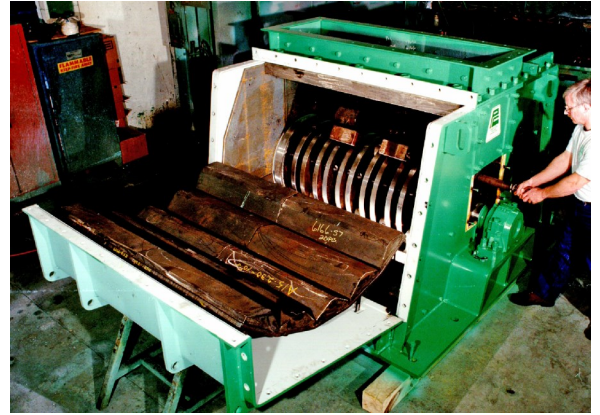


TerraSource Global's Pennsylvania Crusher reversible impactors use free-air impact to fracture materials along natural fault lines and an open-bottom design to evacuate material quickly. This combination **generates fewer fines** and **consumes less horsepower per ton than hammermills**.

We manufacture two types of reversible impactors: The CAL and the CXC. To help determine the best model for you, we provide **direct consultation with our engineering team at our Demonstration & Testing Center**. Our engineers will run your material through full-production units and perform a detailed analysis of the results. **They'll work with you to determine the right size and configuration for your critical processes** based on the extensive testing data. Go to TerraSource.com or ask your local sales representative for more details.



The curved breaker block assembly matches the hammer circle profile.

CAL models

Our CAL models are the preferred choice of the mineral processing industry.

Receive optimum value for your investment

- Tight top-size control and minimum fines **increase production capabilities**
- High reduction ratios (up to 35:1) **reduce need for multiple machines in a series**
- Open-bottom design **consume less horsepower per ton** and **prevents overcrushing**
- Reversible rotation maintains sharp hammer profiles and doubles the wear area, which **improves crushing performance**
- Cast hammer profiles **meet the requirements of diverse operations**

Minimize your downtime

- Cast breaker blocks **facilitate speedy maintenance**
- Detachable center housing **permits easy removal of the rotor assembly**
- Open bottom design **protects against damage from uncrushables**
- Split bearing housing **enables fast and simple inspection and maintenance**
- Individually replaceable breaker blocks **maximize part life** and **reduce maintenance costs**
- Hinged breaker block supports **compensate for wear without shutting down equipment**

Built to last

Our CAL's heavy-duty and durable construction enables continuous, reliable operation.

- Reversible rotation **equalizes wear on hammers and breaker blocks**
- Keyed abrasion-resistant rotor discs **resist shifting during operation**
- Tapered bore self-aligning spherical roller bearing **smoothly handles harsh loads**

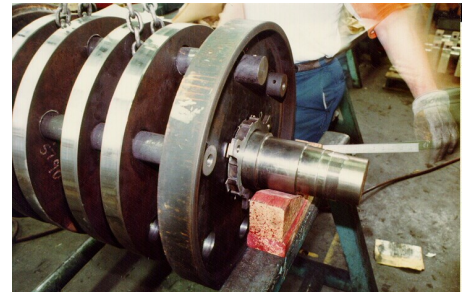
Extended wear life

- Durable carbon manganese liners
- Sturdy cast breaker blocks and hammers
- Heat-treated alloy steel rotor shaft

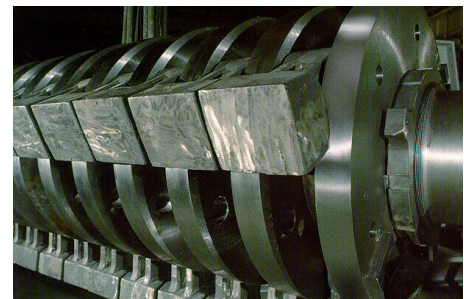
CXC model

Our CXC model is **the same sturdy machine as the CAL** in a smaller package.

- Small installation space **increases adaptability to plant layouts**
- Reduction ratios up to 16:1 **reduce need for multiple machines in a series**
- Adjustable lower breaker block assemblies **compensate for wear without shutting down equipment**



The suspension discs are keyed to the shaft.



Reversible rotation equalizes wear.

Benefit from a long-term partnership

Our teams of experts support you throughout the purchasing process and the life of your reversible impactor.

Count on TerraSource Global to

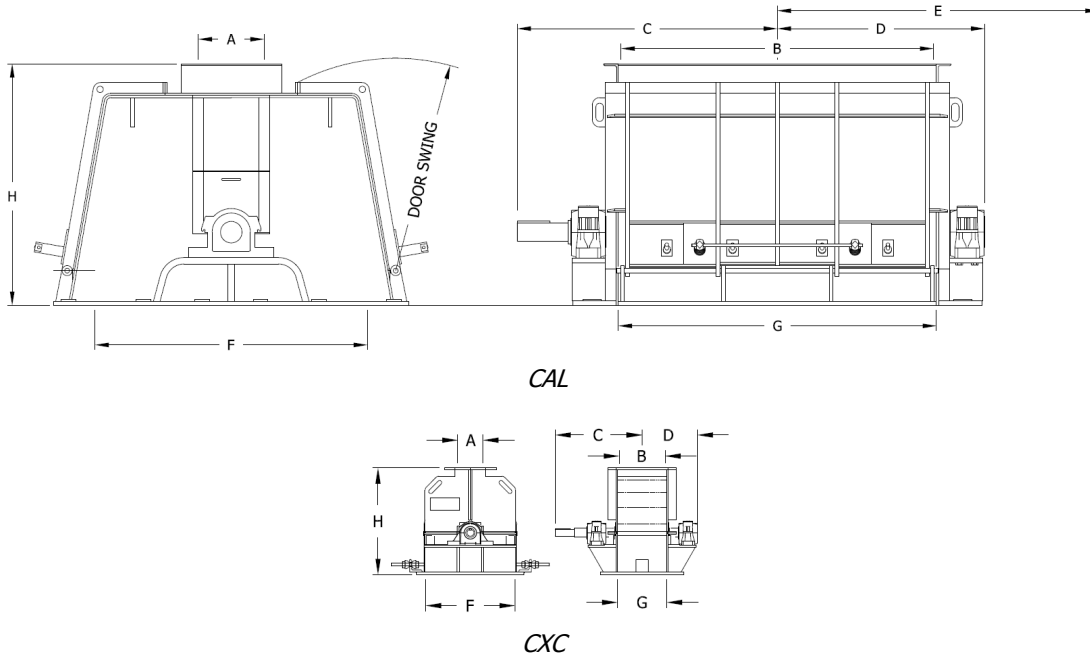
- **Improve your operation's success** with our application expertise
- **Maintain original OEM performance** with precision parts and our rebuild program
- **Ensure smooth unit integration** with skilled start-up and installation assistance
- **Apply our extensive knowledge** to train and support operators and maintenance personnel

Contact your local sales representative or our customer service team at info@terrasource.com to learn more about the benefits of a long-term partnership with TerraSource Global.

Reversible Impactors

Dimensions and weights

The following diagrams and tables illustrate the common dimensions and weights of our models.



Approximate dimensions* (in. and mm) and shipping weights

CAL

Model No.	Input Opening		Overall Width Requirements			Discharge Opening		Height (H)	Weight (LBS., KG)
	(A)	(B)	(C)	(D)	(E**)	(F)	(G)		
3-32A	9 3/4" (248)	13" (330)	20 7/8" (530)	14 1/4" (362)	14" (356)	71" (1,803)	55" (1,397)	48" (1,219)	4,200 (1,905)
5-32A	13" (330)	19 1/4" (489)	27" (686)	19" (483)	28" (711)	55" (1,397)	19 1/4" (489)	48" (1,219)	5,950 (2,700)
5-38A	15 1/2" (394)	19 1/4" (489)	27" (686)	19 5/8" (498)	34 1/2" (876)	63 1/4" (1,607)	19 1/4" (489)	57" (1,448)	8,400 (3,810)
7-38A	15 1/2" (394)	28 1/2" (724)	32 5/8" (829)	24 3/8" (619)	42" (1,067)	63 1/4" (1,607)	30" (762)	57" (1,448)	10,900 (4,944)
9-38A	15 1/2" (394)	38" (965)	38 1/2" (978)	29" (737)	56" (1,422)	63 1/4" (1,607)	38" (966)	57" (1,448)	13,300 (6,033)
11-38A	15 1/2" (394)	48" (1,219)	48" (1,219)	36" (914)	72" (1,829)	63 1/4" (1,607)	49 1/2" (1,257)	57" (1,448)	15,450 (7,008)
11-44A	18" (457)	48" (1,219)	48" (1,219)	36" (914)	72" (1,829)	74 1/2" (1,892)	49 3/4" (1,264)	66" (1,676)	19,000 (8,618)
15-44A	18" (457)	66 3/4" (1,695)	57 3/8" (1,457)	45 3/8" (1,153)	100" (2,540)	74 1/2" (1,892)	68 1/4" (1,734)	66" (1,676)	24,900 (11,294)
19-44A	18" (457)	85 1/2" (2,172)	71 3/16" (1,808)	56 23/32" (1,441)	129" (3,277)	74 1/2" (1,892)	87" (2,210)	66" (1,676)	34,000 (15,422)

CXC

Model No.	Input Opening		Overall Width Requirements			Discharge Opening		Height (H)	Weight (LBS., KG)
	(A)	(B)	(C)	(D)	(E**)	(F)	(G)		
00-16	6" (152)	11" (279)	20 15/16" (532)	13 1/4" (337)	N/A	21 1/2" (546)	11 3/4" (298)	25 1/2" (648)	825 (374)

*Certified drawings furnished for installation. AutoCAD drawings available upon request.

**Clearance for removal of suspension bar. Supervised installation available.

TERRASOURCE
GLOBAL

OUR FLAGSHIP BRANDS



Call toll-free at **855-483-7721** or email info@terrasource.com to find the sales representative nearest you.

Rev. 08/17

The brands comprising TerraSource Global are wholly-owned subsidiaries of Hillenbrand, Inc. (NYSE: HI), based in Indiana. © 2017 TerraSource Global. All Rights Reserved.