



ASSOCIATED
MECHANICAL
CONTRACTORS,
INC.

GREENSBORO, NORTH CAROLINA

GURRIES & OKAMOTO INC.

MECHANICAL ENGINEERS

PO BOX 27488 DUCK BLVD. BLDG. 200
CORVETTES, GA. 30094-7748

CODES, RULES AND REGULATIONS

ALL WORK AND MATERIALS SHALL BE IN FULL ACCORDANCE WITH THE LATEST EDITIONS AND REVISIONS OF THE STATE PIPE MARSHAL, CALIFORNIA ADMINISTRATIVE CODE - TITLE 24, SERVING UTILITY COMPANIES ASME BOILER & PRESSURE VESSEL CODE, OSHA AND OTHER APPLICABLE STATE AND LOCAL LAWS, ORDINANCES AND REGULATIONS, AND ANSI CODE FOR PRESSURE RATING, ETC. NOTHING IN THESE PLANS OR SPECIFICATIONS IS TO BE CONSIDERED TO PERMIT WORK NOT CONFORMING TO THESE CODES. WHERE KIND OR A DETAILED SPECIFICATION IS INDICATED ON THE PLANS OR IN THE SPECIFICATIONS, THIS REQUIREMENT SHALL GOVERN.

THIS DRAWING, DESIGN AND/OR SPECIFICATION IS THE EXCLUSIVE PROPERTY OF GURRIES AND OKAMOTO INC. IT IS ACCEPTABLE CONSIDERED AN AGREEMENT THAT IT SHOULD BE TREATED AS A STRICTLY CONFIDENTIAL DOCUMENT. IT IS ISSUED FOR NO PURPOSE OTHER THAN TO AID IN THE ASSEMBLY, CONSTRUCTION OR OPERATION OF THE UNITS OF SYSTEMS SHOWN FOR THIS SPECIFIC PROJECT ONLY, OR AS OTHERWISE EXPRESSLY AUTHORIZED IN WRITING BY GURRIES AND OKAMOTO INCORPORATED. IT IS TO BE REPRODUCED UPON REQUEST, AND IS NOT TO BE COMMUNICATED, DISCLOSED, OR COPIED, EXCEPT AS EXPRESSLY AUTHORIZED IN WRITING BY GURRIES AND OKAMOTO INCORPORATED.

WRITTEN DIMENSIONS ON THIS DRAWING SHALL TAKE PRECEDENCE OVER SCALED DIMENSIONS. CONTRACTOR SHALL VERIFY AND BE RESPONSIBLE FOR ALL DIMENSIONS AND CONDITIONS ON THE JOB AND GURRIES AND OKAMOTO INCORPORATED OR THEIR AGENTS SHALL BE NOTIFIED OF ANY VARIATIONS FROM THE DIMENSIONS AND CONDITIONS SHOWN BY THESE DRAWINGS. SHOP DETAILS SHALL BE SUBMITTED TO THIS OFFICE FOR APPROVAL BEFORE PROCEEDING WITH FABRICATION.

THIS DRAWING HAS BEEN
REDUCED TO HALF SIZE

NO.	REVISION	DATE	BY



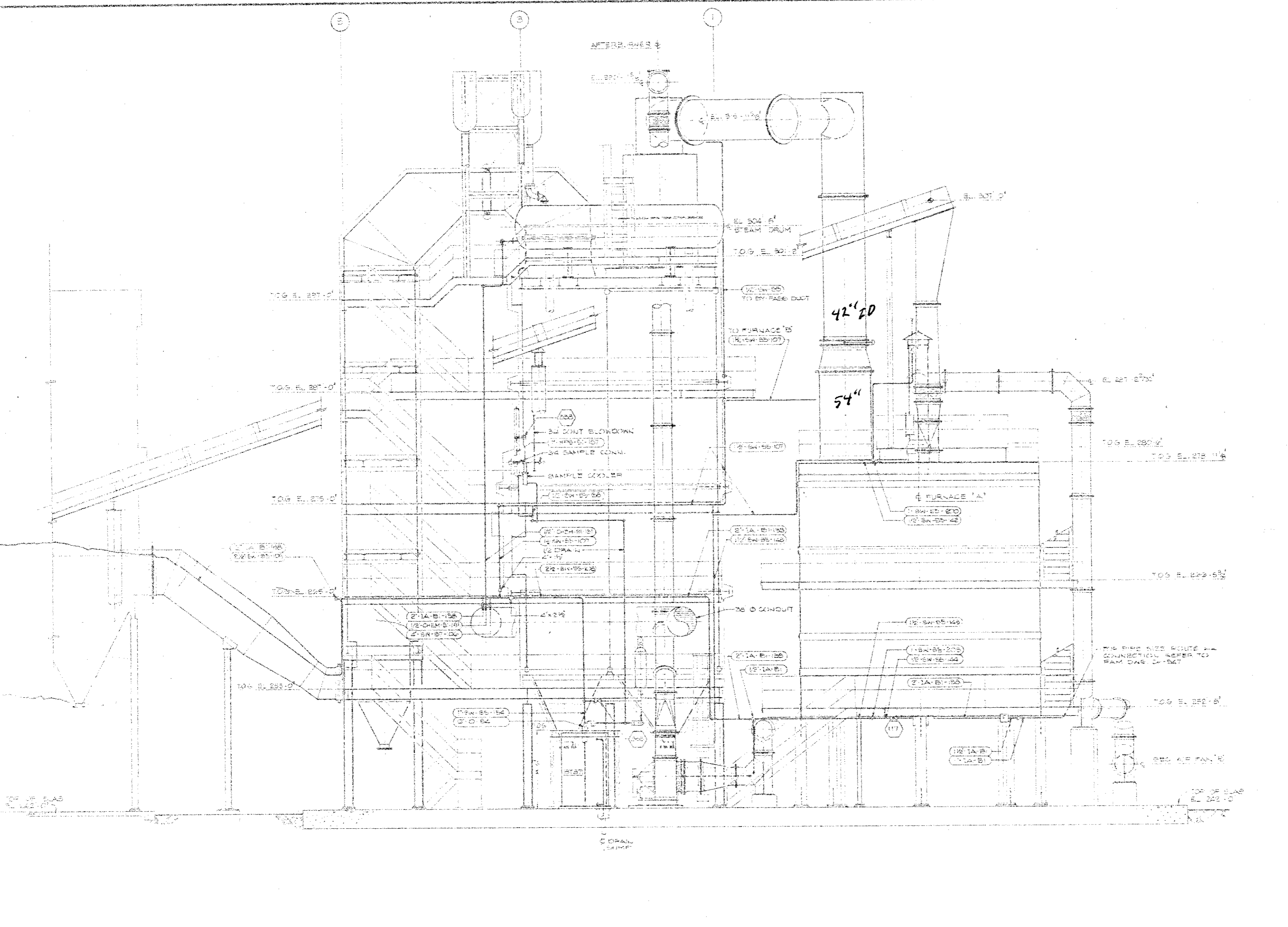
CALIFORNIA AGRICULTURAL POWER COMPANY, INC.

CHOWCHILLA BIOMASS
POWER PLANT
ASSOCIATES
PLANT NO. 1

CHOWCHILLA, CALIFORNIA

INSET TITLE
MHP AND BOILER ELEVATION
(NORTH)

PROJECT NO.	50-37	REV.	
DATE			



NORTH ELEVATION
SCALE: 1/4\"/>