

ITEM	DESCRIPTION	PART NUMBER	NO REQ'D
1	ROTOR SHAFT	TAS 10010 A-5	1
2	UPPER DEFLECTOR	TAS 10010 A-5	1
3	SET SCREW, SQUARE HEAD	1/2" - 13 UNC	21
4	KEY, UPPER DEFLECTOR	1" x 1/2" x 2 1/2"	1
5	COLLAR - UPPER STAGES	TAS 10010 A-5	4
6	ROTOR PLATE - FIRST STAGE	TAS 10010 A-6	1
7	BOLT	1/2" - 13 UNC	24
8	LOCKWASHER	5/8"	24
9	NUT	5/8" UNC	24
10	ROTOR PLATE - SECOND STAGE	TAS 10010 A-6	1
11			/
12	ROTOR PLATE - THIRD STAGE	TAS 10010 A-6	1
13			/
14	ROTOR PLATE - FOURTH STAGE	TAS 10010 A-6	1
15	COLLAR - FIFTH STAGE	TAS 10010 A-6	1
16	ROTOR - FIFTH STAGE	TAS 10010 A-6	1
17	"		/
18	IMPACTER - LOWER STAGES	TAS 5MCRB 2X10ST	20
19	KEY	1" x 1" x 6"	5
20			/
21	CAPSCREW	1/2" - 1 3/4" UNC.	160
22	IMPACTER - UPPER STAGES	TAS 5MCRB 2X10SL	24
23			/
24			/

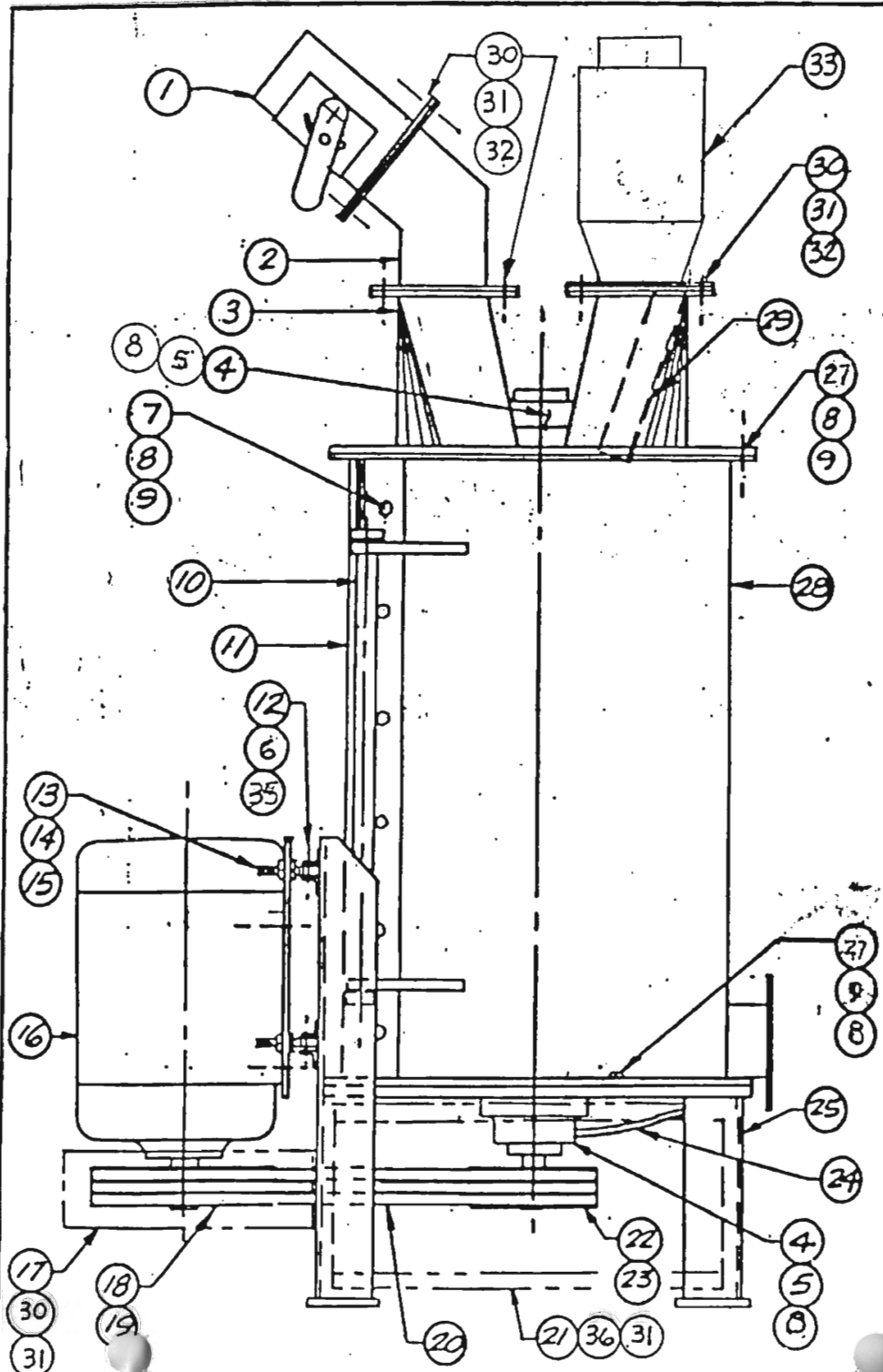
10010 - A ROTOR ASSY

DEVIL SLIDE  
KILN#1

**TAS INC.**

BOX 68, MAGNA, UT. 8404

ROTOR ASSY - 42B1 MILL  
10010 A SHEET-2



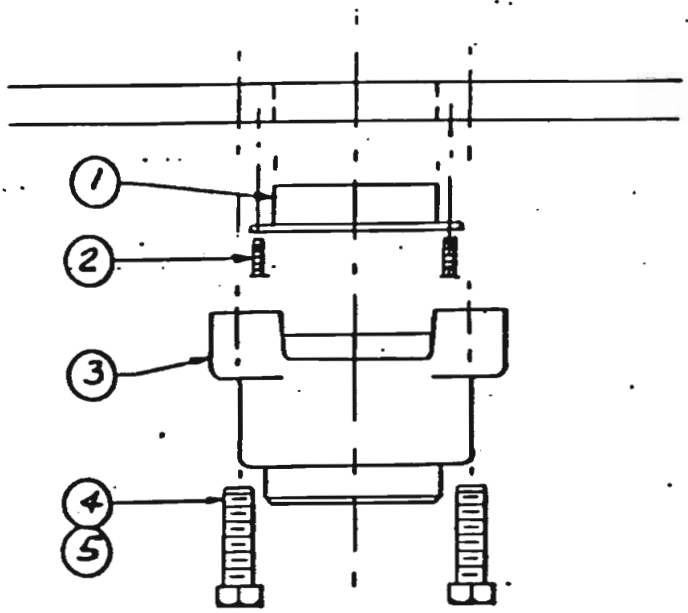
ITEM	DESCRIPTION	PART NUMBER	NO. REQ'D
1	AIR INLET BOX	TAS 10010A-10	1
2	AIR INLET DEFLECTOR	TAS 10010A-10	1
3	COVER ASSY	TAS 10010A-4	1
4	BEARING: Moline F.B. TYPE E	3 15/16 SIZE	2
5	BOLT	7/8"-3 1/2" UNIC	4
6	LOCKWASHER	1" I.D.	2
7	BOLT	7/8"-2 1/4" UNIC	
8	LOCKWASHER	7/8" I.D.	
9	NUT	7/8" UNIC	
10	LINGE ASSY	TAS 10010-7	1
11	HOUSING HALF WITH DISCHARGE	TAS 10010-3	1
12	BOLT	1"-3" UNIC	2
13	EYEBOLT (1" DIA x 12 LG ALL THRO)	TAS 10010-2	2
14	WASHER, FLAT	1 1/2" I.D. x 3 1/4" O.D.	4
15	NUT	1 1/2" UNIC	4
16	ELECTRIC MOTOR (U.S.)	350 HP. 460 V. 1750 R.P.M.	1
17	BELT GUARD, REAR	TAS 10010-2	1
18	SHEAVE: 10 UB V 140	BUSH. 3 3/8"	1
19	KEY	1" x 1" x 10"	1
20	BELT	8 V 1600	5
21	BELT GUARD	TAS 10010 A-2	3
22	SHEAVE: 10 UB V 150	BUSH. 3 15/16"	1
23	KEY	1" x 1" x 6"	1
24	FLEXIBLE LUBRICATION LINE	1/8" SIZE x 19' LG	1
25	BASE ASSY	TAS 10010 A-3	1
27	BOLT	7/8"-2 3/4" UNIC	12
28	HOUSING HALF	TAS 10010 A-3	1
29	COAL DEFLECTOR	TAS 10010 A-4	1
30	BOLT	3/8"-1 1/4" UNIC	28
31	LOCKWASHER	3/8" - I.D.	42
32	NUT	3/8" - UNIC.	24
33	MAGNET BOX	10022 SHEET 38/42	1
		7/8"-3" UNIC.	12
35	NUT	UNIC	2
36	BOLT	3/8"-1 1/2" UNIC	32

DEVIL SLIDE KILN #1

**TAS-INC.**

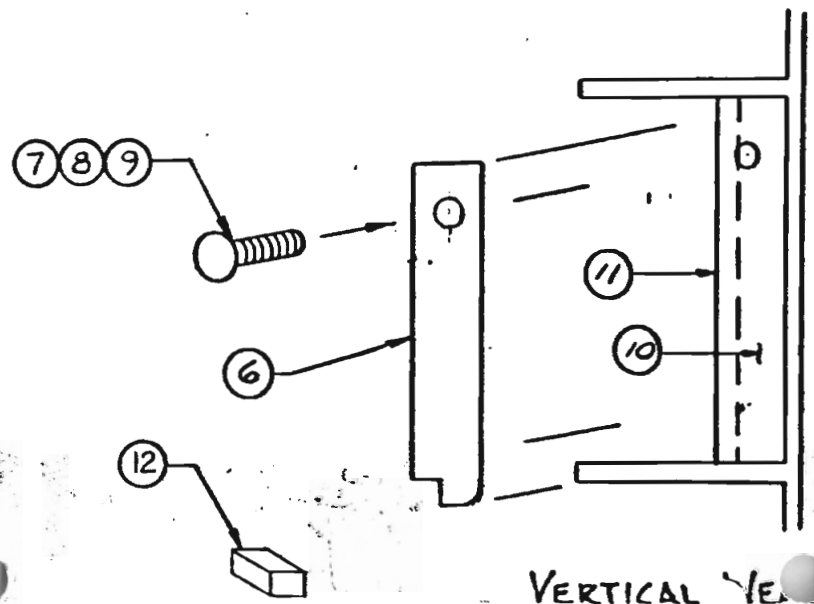
BOX 68, MAGNA, UT. 84044

42 B MILL SHEET 1



ITEM	DESCRIPTION	PART NUMBER	QTY
1	LOWER BUSHING	TAS 10010A-6	1
2	SELF TAPPING SCREW	9/64" - 1/8"	2
3	LOWER BEARING: M/PLINE F.B. TYPE E	3 5/16" SIZE	1
4	BOLT	7/8" - 3 1/2" UNC.	4
5	LOCKWASHER	7/8" - I.D.	4
6	VERTICAL WEAR PLATE	TAS 10010A-5	18
7	CARRIAGE BOLT	3/8" - 2" UNC.	18
8	LOCKWASHER	3/8" I.D.	18
9	NUT	3/8" UNC.	18
10	CERAMIC TILE	1" x 2" x 6" 4 1/2° TAPER	240
11	VERTICAL BAFFLE	TAS 1001A-5	18
12	KEY	7/16" x 7/16" x 1"	18

LOWER BEARING INSTL.



VERTICAL WEAR PLATE INSTL

DEVIL SLIDE  
KILN #1

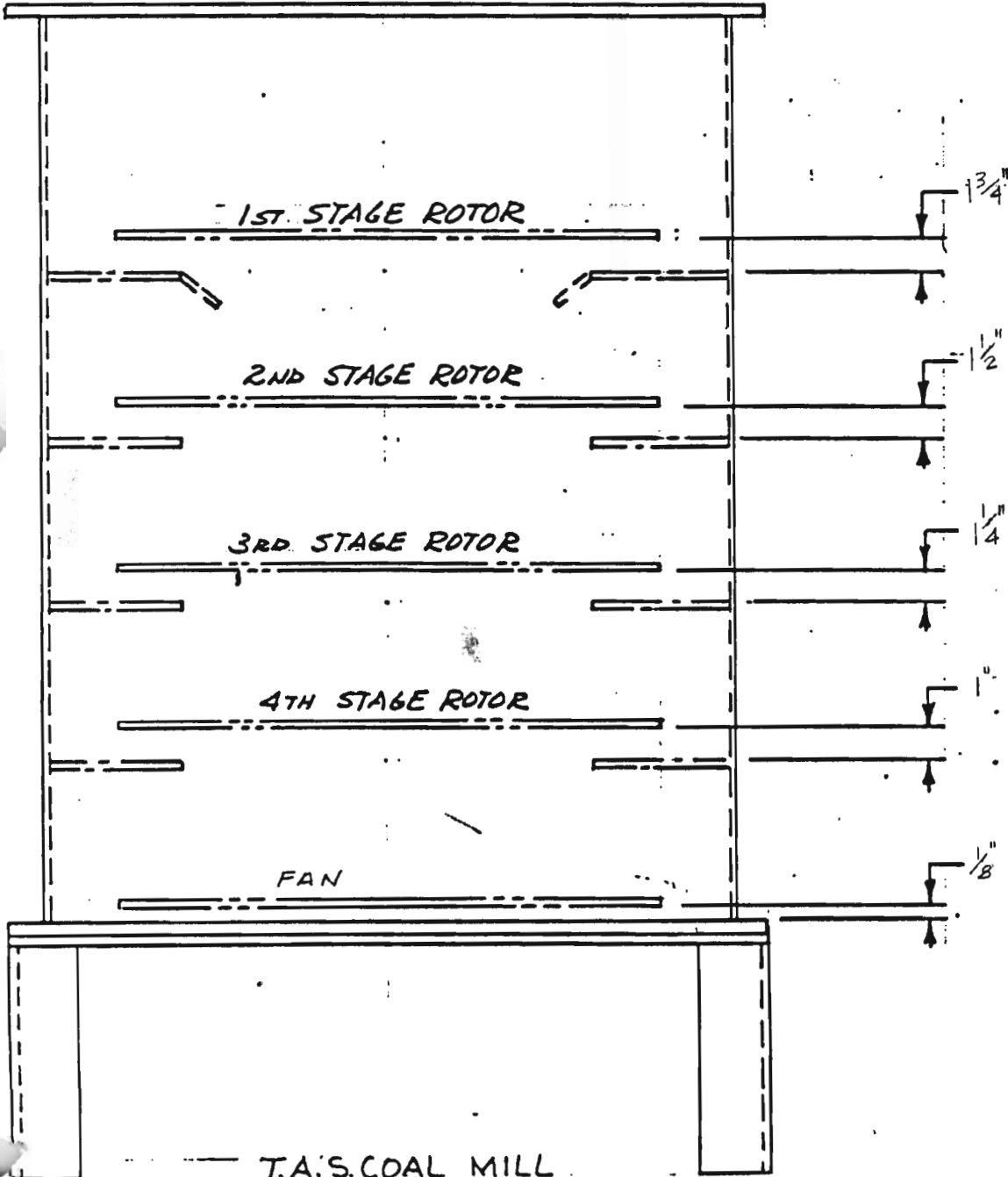
**TAS-INC.**  
 BOX 68, MAGNA, UT 84444  
 42" B MILL 10010A SHEET 3

**T.heory  
A.pplication  
S.ervice  
Inc.**

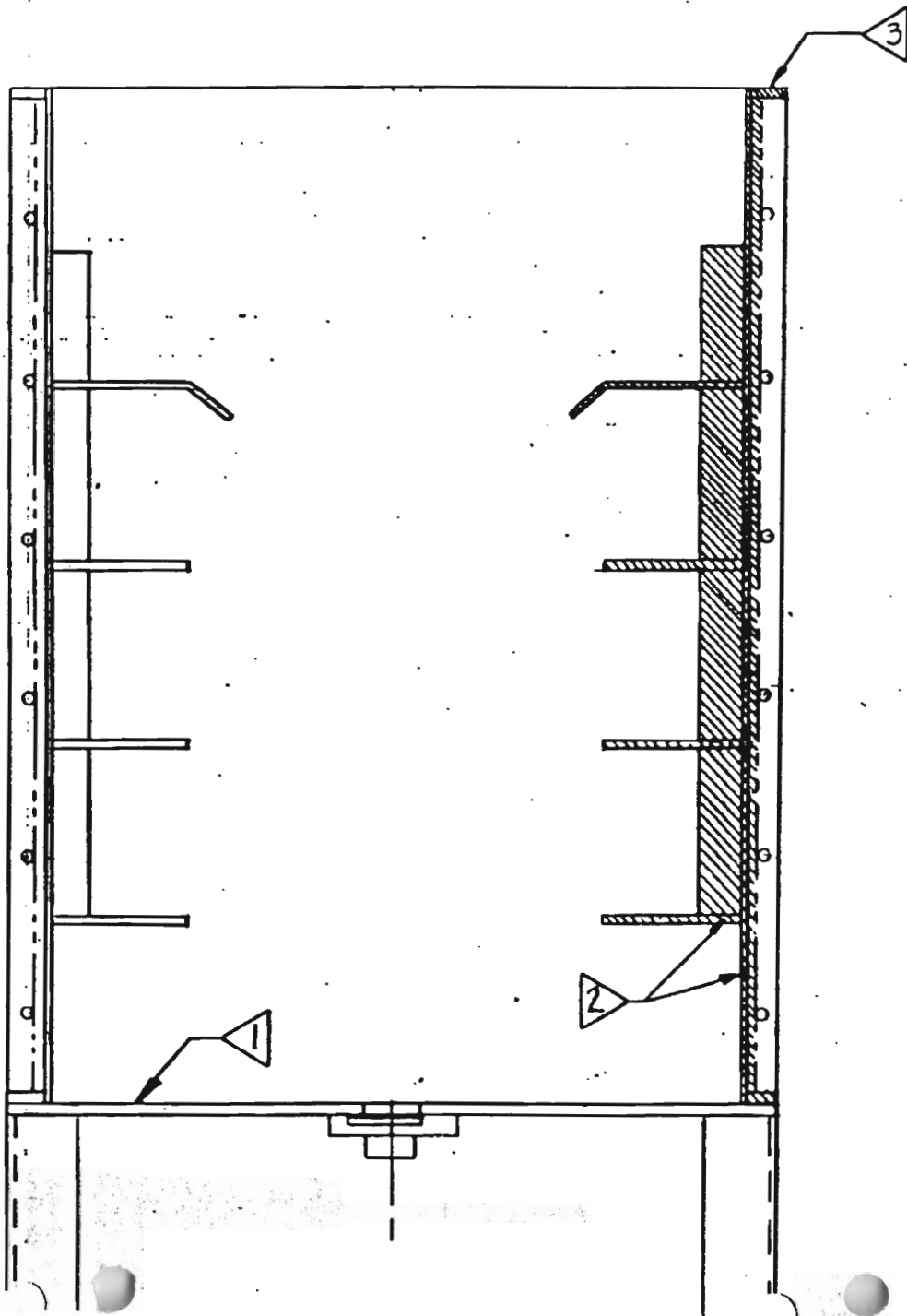
Junction I-80 & Hiway 50  
P.O. Box 68

Phone (801) 250-2908

Lakepoint, Utah 84044  
Magna, Utah 84044



STAGE SETTINGS - 42B" MILL  
P10010A SHEET 4  
DEVIL SLIDE  
KILN # 1



WHEN ASSEMBLING MILL: COAT ALL MATING SURFACES w 1/4" BEAD OF SILICONE SEALANT (APPLY BEAD TO BOTH FACES BEING JOINED):

- ▷ 1 BOTTOM OF HOUSING & TOP OF BASEPLATE ;
- ▷ 2 SIDE FLANGES (TO INSIDE EDGE OF BOLT HOLES); EDGE OF CERAMIC TILES; EDGE OF INNER RINGS;
- ▷ 3 TOP OF HOUSING FLANGE & BOTTOM OF COVER PLATE.

DEVIL SLIDE  
KILN #1

**TAS-INC.**

BOX 68, MAGNA, UT. 8 44

42 B MILL - ASSEMBLY DATA  
10010-A - 611175