

FOUNDATION DESIGN ASSUMPTIONS:

FOUNDATION DESIGNS HEREIN ARE BASED ON AN ALLOWABLE SOIL BEARING CAPACITY OF 15 KIPS PER SQUARE FOOT PER RECOMMENDATIONS MADE BY HANNIBAL TESTING LABORATORIES, INC. REPORT NO. 88-785, DATED 18 MARCH 1988. THE CONTRACTOR SHALL BE RESPONSIBLE TO HAVE A QUALIFIED GEOTECHNICAL ENGINEER VERIFY THE EXISTING SUBSURFACE CONDITIONS AND VALIDATE THE HANNIBAL TESTING LABORATORIES RECOMMENDATIONS. SHOULD CONDITIONS INDICATE THE ABOVE MENTIONED SOIL BEARING CAPACITY IS NOT ATTAINABLE, STOP WORK IMMEDIATELY AND NOTIFY AMEREX INDUSTRIES. ALL FOOTINGS SHOULD BE BASED IN SOUND SHALE AT LEAST FOUR FEET BELOW THE EXISTING GROUND SURFACE PER THE ABOVE REFERENCE GEOTECHNICAL REPORT. PIER PEDESTAL HEIGHTS MAY BE REDUCED, IF REQUIRED.

NOTE:

EXISTING FOUNDATIONS MUST BE ACCURATELY LOCATED PRIOR TO INSTALLATION OF NEW FOOTINGS. IF EXISTING CONDITIONS DIFFER FROM THOSE SHOWN, CONTACT AMEREX INDUSTRIES ENGINEERING IMMEDIATELY.

GENERAL CONCRETE NOTES:

1. CONCRETE: 4,000 PSI MINIMUM. MAKE 4 TEST CYLINDERS PER 50 CUBIC YARDS OR A FRACTION THEREOF. TEST ONE (1) CYLINDER AT 7 DAYS AND TWO (2) AT 28 DAYS. THE REMAINING CYLINDER WILL BE HELD IN RESERVE AND TESTED IF THE CONCRETE STRENGTH FAILS AT 28 DAYS. NO CONCRETE WILL BE ACCEPTABLE IF TESTS INDICATE IT IS LESS THAN SPECIFIED STRENGTH. SUBMIT CONCRETE DESIGN MIX PRIOR TO PLACEMENT OF ANY CONCRETE.
2. CONCRETE NOT PLACED WITHIN 90 MINUTES FROM THE TIME MIXING IS STARTED SHALL BE REJECTED AND SHALL BE REMOVED FROM THE JOB BY THE CONTRACTOR.
3. DEPOSIT CONCRETE AS NEAR AS POSSIBLE TO ITS FINAL LOCATION.
4. CONCRETE SHALL BE COMPACTED BY INTERNAL VIBRATING EQUIPMENT. VIBRATORS SHALL NOT BE USED TO MOVE THE CONCRETE LATERALLY INSIDE THE FORMS. AT LEAST ONE SPARE VIBRATOR IN GOOD WORKING CONDITION SHALL BE MAINTAINED AT THE JOBSITE DURING CONCRETE PLACING OPERATION. DURATION OF VIBRATION SHALL BE LIMITED TO THE TIME NECESSARY TO PRODUCE SATISFACTORY CONSOLIDATION WITH CAUSING SEGREGATION. VIBRATOR SHALL BE MOVED CONSTANTLY AND PLACED IN EACH SPECIFIC LOCATION ONLY ONCE.
5. IF FREEZING TEMPERATURES ARE ANTICIPATED WITH THE CURING PERIOD, OR THE TEMPERATURES OF SURFACES TO REZEAL CONCRETE ARE LESS THAN 40 DEGREES FAHRENHEIT, COLD WEATHER CONCRETING REQUIREMENTS IN ACCORDANCE WITH ACI 308R SHALL BE IMPLEMENTED. SALT, CHECKEROLS OR OTHER MATERIALS SHALL NOT BE INCORPORATED INTO THE CONCRETE TO PREVENT FREEZING.

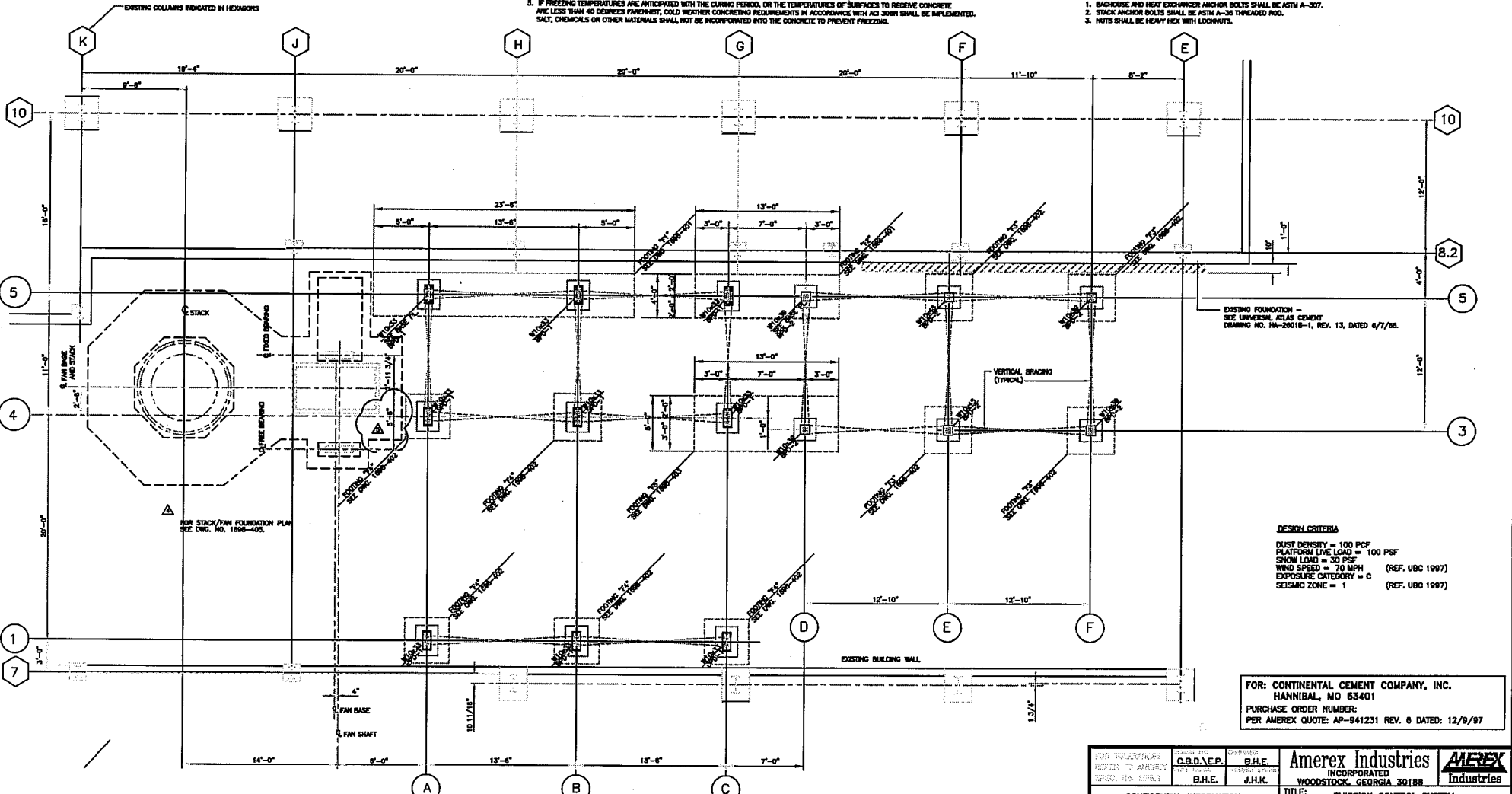
REV.	DESCRIPTION	STBY.	DATE
	ORIGINAL RELEASE	E.P.	8/4/88
1	REMOVED DETAIL NUMBERS AND ADDED DRG. NUMBERS	E.P.	8/18/88
2	RELOCATED FAN & REWORKED DETAIL DESIGNATIONS	E.P.	8/18/88
3	RELOCATED FAN PER REV. 8 OF C. A. & ADDED FAN DIMENSIONS	E.P.	8/17/88
4	REMOVED STACK/FAN FOUNDATION PLAN	CSMT	8/18/88
5	1'-2" WIDE 8'-2"	E.P.	8/18/88

CONCRETE REINFORCING:

1. REINFORCING STEEL SHALL CONFORM TO THE REQUIREMENTS OF ASTM A-762, GRADE 60.
2. REINFORCING STEEL SHALL BE CLEAN AND FREE OF ALL RUST, SCALE, DIRT, PAINT, OIL OR OTHER FOREIGN MATERIAL.
3. BAR SUPPORTS FOR REINFORCING STEEL SHALL CONFORM TO THE REQUIREMENTS OF CSR MANUAL OF STANDARD PRACTICE.
4. REINFORCING STEEL SHALL BE SECURED IN POSITION, INSPECTED AND APPROVED BEFORE PLACING CONCRETE.
5. NO SPLICES WILL BE PERMITTED OTHER THAN WHERE SHOWN.
6. SUBMIT SHOP DRAWINGS TO THE ENGINEER ON ALL REINFORCING. NO REINFORCING SHALL BE FIELD BENT. NO CONCRETE SHALL BE PLACED UNTIL REINFORCING SHOP DRAWINGS HAVE BEEN APPROVED BY THE ENGINEER.

ANCHOR BOLTS:

1. BARGEHOUSE AND HEAT EXCHANGER ANCHOR BOLTS SHALL BE ASTM A-307.
2. STACK ANCHOR BOLTS SHALL BE ASTM A-36 TREADED ROD.
3. NUTS SHALL BE HEAVY HEX WITH LOCKWASHERS.



DESIGN CRITERIA
 DUST DENSITY = 100 PCF
 PLATFORM LIVE LOAD = 100 PSF
 SNOW LOAD = 30 PSF
 WIND SPEED = 70 MPH (REF. UBC 1997)
 EXPOSURE CATEGORY = C
 SEISMIC ZONE = 1 (REF. UBC 1997)

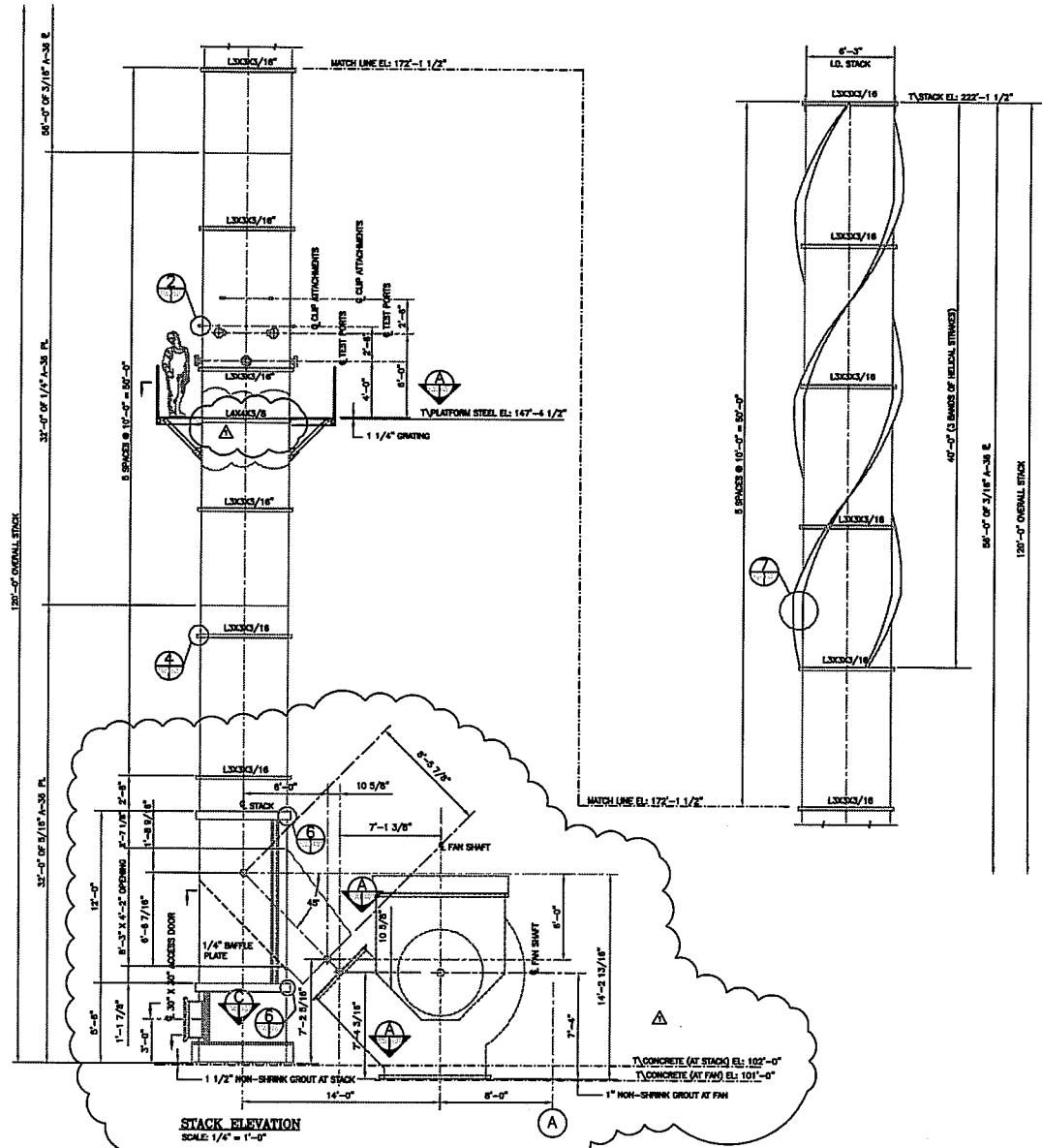
FOR: CONTINENTAL CEMENT COMPANY, INC.
 HANNIBAL, MO 63401
 PURCHASE ORDER NUMBER:
 PER AMEREX QUOTE: AP-841231 REV. 6 DATED: 12/9/97

FOUNDATION PLAN
 BOTTOM OF BASE PLATE EL. 101'-0"
 SCALE: 1/4" = 1'-0"

CERTIFIED FOR CONSTRUCTION

FOR: CONTINENTAL CEMENT COMPANY, INC. HANNIBAL, MO 63401 PURCHASE ORDER NUMBER: PER AMEREX QUOTE: AP-841231 REV. 6 DATED: 12/9/97	<table border="1"> <tr> <td>DESIGNED BY: C.B.D./E.P.</td> <td>CHECKED BY: B.H.E.</td> </tr> <tr> <td>DATE: 8/18/88</td> <td>DATE: 8/18/88</td> </tr> <tr> <td>BY: B.H.E.</td> <td>BY: J.H.K.</td> </tr> </table>	DESIGNED BY: C.B.D./E.P.	CHECKED BY: B.H.E.	DATE: 8/18/88	DATE: 8/18/88	BY: B.H.E.	BY: J.H.K.	Amerex Industries INCORPORATED WOODSTOCK, GEORGIA 30188 AMEREX Industries
DESIGNED BY: C.B.D./E.P.	CHECKED BY: B.H.E.							
DATE: 8/18/88	DATE: 8/18/88							
BY: B.H.E.	BY: J.H.K.							
CONFIDENTIAL INFORMATION THIS DRAWING IS THE PROPERTY OF AMEREX INDUSTRIES. IT IS TO BE USED ONLY FOR THE PROJECT AND SITE SPECIFICALLY IDENTIFIED HEREON. IT IS NOT TO BE REPRODUCED, COPIED, OR TRANSMITTED IN ANY FORM OR BY ANY MEANS, ELECTRONIC OR MECHANICAL, INCLUDING PHOTOCOPYING, RECORDING, OR BY ANY INFORMATION STORAGE AND RETRIEVAL SYSTEM, WITHOUT THE WRITTEN PERMISSION OF AMEREX INDUSTRIES.		TITLE: EMISSION CONTROL SYSTEM FOUNDATION PLAN SCALE: AS NOTED PLOT 1 : 48 DRAWING No: 1898-400						

REV.	DESCRIPTION	DATE	BY
1	PRELIMINARY - FOR INFORMATION ONLY	6/18/76	E.P.
2	ORIGINAL RELEASE	6/23/76	G.MKT
3	REMOVED HOLD AND REBAR PER SHOP COMMENTS	6/23/76	E.P.



SPECIFICATION FOR EXHAUST STACK

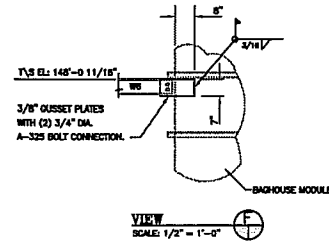
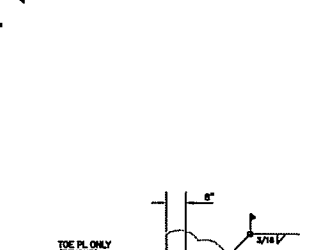
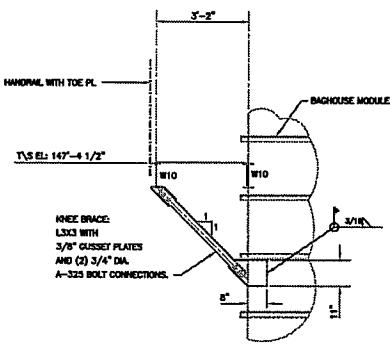
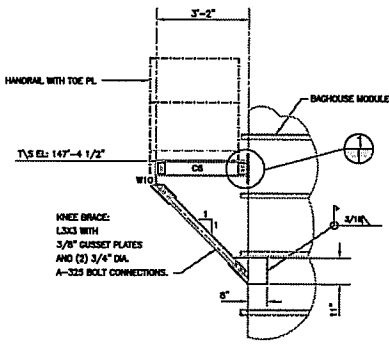
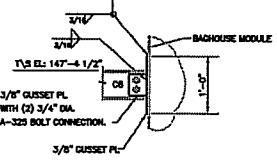
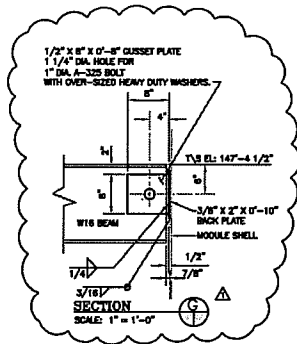
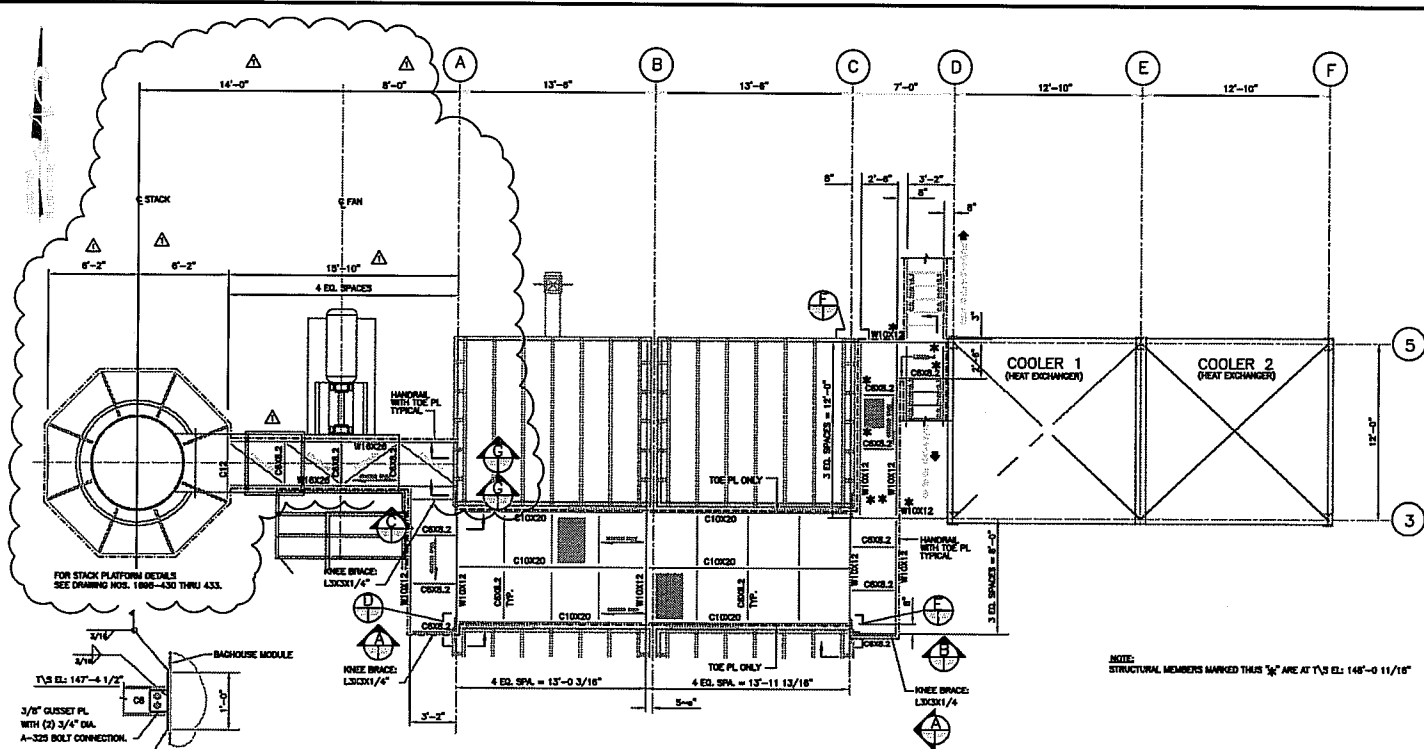
- A. GENERAL**
- THE INSTALLATION CONTRACTOR (ERECTOR) SHALL ASSEMBLE AS REQUIRED, ERECT AND INSTALL ALL PLATFORM AS SHOWN ON THE EXHAUST STACK ERECTION AND ASSEMBLY DRAWINGS. THIS WORK CONSISTS OF MATING UP, BOLTING AND SEAL, WELDING ANY EXHAUST STACK COMPONENT. ALL SEAM WELDS SHALL BE GAS TIGHT SO THAT NO WATER, AIR, OR GAS CAN BE DRAWN THROUGH FRIVOLIES OR CRACKS IN THE WELDS.
 - FABRICATOR / SUPPLIER SHALL BE RESPONSIBLE FOR THE SUPPLY, LOCATION AND INSTALLATION OF ALL LIFTING LUGS AND TEMPORARY BRACING REQUIRED FOR THE SAFE UNLOADING AND ERECTION OF PLATFORM ITEMS, AS SHOWN ON THE DRAWINGS.
 - ALL PLATFORM SHALL BE STORED ABOVE GROUND ON PLATFORMS, SKIDS, OR OTHER SUPPORTS. MATERIALS SHALL BE KEPT FREE OF DIRT, DROSS, OR OTHER FOREIGN MATTER. DO NOT ALLOW MATERIALS TO CORRODE.
 - ALL PLATFORM IS TO BE CAREFULLY HANDLED AT ALL TIMES. IT SHALL NOT BE DROPPED OFF CRAN OR TRUCKS AND WHILE STORED AT THE SITE, ANY SURFACES OF THE SHOP COAT FINISH SHALL BE PROTECTED UP AFTER ERECTION, AND BEFORE ASSEMBLING, ALL CONTACT SURFACES SHALL BE THOROUGHLY CLEANED.
 - PENETRATIONS THROUGH ANY COMPONENTS SHALL BE SEAL WELDED GAS TIGHT.
 - AFTER EACH STACK SECTION IS IN PLACE, THE INSTALLATION CONTRACTOR SHALL CHECK FOR PLUMBNESS, LEVELNESS AND OVERALL HEIGHT PRIOR TO WELDING.
- B. APPLICABLE STANDARDS**
- APPLICABLE PUBLICATIONS: THE PUBLICATIONS LISTED BELOW FORM A PART OF THIS SPECIFICATION TO THE EXTENT REFERENCED. THE PUBLICATIONS ARE REFERRED TO BY THE TEXT OF THE BASIC SPECIFICATION ONLY.
 - AMERICAN INSTITUTE OF STEEL CONSTRUCTION (AISC) PUBLICATION: SPECIFICATION FOR STRUCTURAL STEEL FOR BUILDINGS (JUNE 1, 1969, WITH COMMENTARY)
 - AMERICAN NATIONAL STANDARDS INSTITUTE (ANSI) STANDARD: Z48.1-1963 SAFETY IN WELDING AND CUTTING
 - AMERICAN SOCIETY FOR NONDESTRUCTIVE TESTING (ASNT) PUBLICATION: SNT-TC-1A PERSONNEL QUALIFICATION AND CERTIFICATION IN NONDESTRUCTIVE TESTING (AUGUST 1964)
 - AMERICAN WELDING SOCIETY (AWS) PUBLICATIONS:
 - A5.1 STRIKES FOR WELDING AN NONDESTRUCTIVE TESTING AND WELDING TERMS AND DEFINITIONS
 - D1.1 STRUCTURAL WELDING CODE - STEEL
 - OSHA "SAFETY AND HEALTH STANDARD" BY THE U.S. DEPARTMENT OF LABOR
 - EXHAUST STACK STRUCTURAL STEEL AND PLATE MATERIAL SHALL CONFORM TO THE REQUIREMENTS OF ASTM A-36. PLATFORM STEEL SHALL CONFORM TO THE REQUIREMENTS OF ASTM A-36.
 - IN GENERAL, WELDED CONNECTIONS SHALL BE WITH E-70 ELECTRODES AND BOLTED CONNECTIONS SHALL BE MADE USING ASTM A-325 GALVANIZED BOLTS.
 - WELDS SHALL BE MADE ONLY BY WELDERS, TACKERS AND WELDING OPERATORS WHO HAVE BEEN QUALIFIED BY TEST AS PRESCRIBED IN THE AWS-D1.1 "STRUCTURAL WELDING CODE" TO PERFORM THE TYPE OF WORK REQUIRED.
 - AFTER ERECTION, ALL SURFACES WHERE PAINT HAS BEEN DAMAGED, SHALL BE GIVEN A FRESH TOUCH-UP COAT OF THE PRIMER USED FOR THE SHOP COAT, AND FINISH COAT AS REQUIRED.
 - PIPE MATERIAL USED IN HANDRAIL CONSTRUCTION SHALL CONFORM TO ASTM A-53, GRADE B OR ASTM A-501.
 - EXTERIOR GRATING TO BE WELDED RECTANGULAR GALVANIZED CARBON STEEL TYPE 1984 WITH 1 1/4" X 3 1/2" BEARING BARS SPACED AT 1 3/4" ON CENTERS AND CROSS BARS SPACED AT 4" ON CENTERS. EACH GRATING PANEL SHALL BE ANCHORED TO EACH SUPPORT BEAM WITH NO LESS THAN FOUR ANCHORS PER PANEL. ALL GRATING SHALL BE BANDED.

CERTIFIED FOR CONSTRUCTION

FOR: CONTINENTAL CEMENT COMPANY, INC.
 HANNIBAL, MO 63401
 PURCHASE ORDER NUMBER:
 PER AMEREX QUOTE: AP-941231 REV. 6 DATED: 12/9/87

APPROVED FOR CONSTRUCTION PURVES DATE: 12/9/87	DRAWN BY: B.H.E.V.A.G. CHECKED BY: DATE:	Amerex Industries INCORPORATED WOODSTOCK, GEORGIA 30188	AMEREX Industries
CONFIDENTIAL INFORMATION THIS DRAWING AND ALL INFORMATION THEREON IS THE PROPERTY OF AMEREX, INC. IT IS CONFIDENTIAL AND PROPRIETARY AND MUST NOT BE USED, REPRODUCED, COPIED, OR CURED UNLESS AUTHORIZED IN WRITING BY AMEREX, INC. IT IS TRANSMITTED TO YOU WITH THE EXPRESS UNDERSTANDING THAT IT IS SUBJECT TO RETURN UPON REQUEST.		TITLE: 6'-3" I.D. STACK - DETAILS SCALE: PLOT 1 : 48 SHT. OF	DATE: DRAWING No 1698-430 REV. 1

REV.	DESCRIPTION	ISSN.	DATE
▲	PRELIMINARY	E.P.	5/15/98
▲	ADDED MEMBER SIZES, DETAILS & DESIGNATIONS	E.P.	5/28/98
▲	RELEASED FOR FABRICATION	E.P.	6/4/98
▲	ADDED MATERIAL TO STACK INFORMATION	E.P.	6/23/98



RELEASED FOR FABRICATION

FOR: CONTINENTAL CEMENT COMPANY, INC.
HANNIBAL, MO 63401
PURCHASE ORDER NUMBER:
PER AMEREX QUOTE: AP-941231 REV. 6 DATED: 12/9/97

FOR TOLERANCES REFER TO AMEREX SPEC. No. MFS.1	DRAWN PURVES DEPT HD B.L.Z.	CHECKED B.L.E. PROJ ENG J.K.
CONFIDENTIAL INFORMATION		

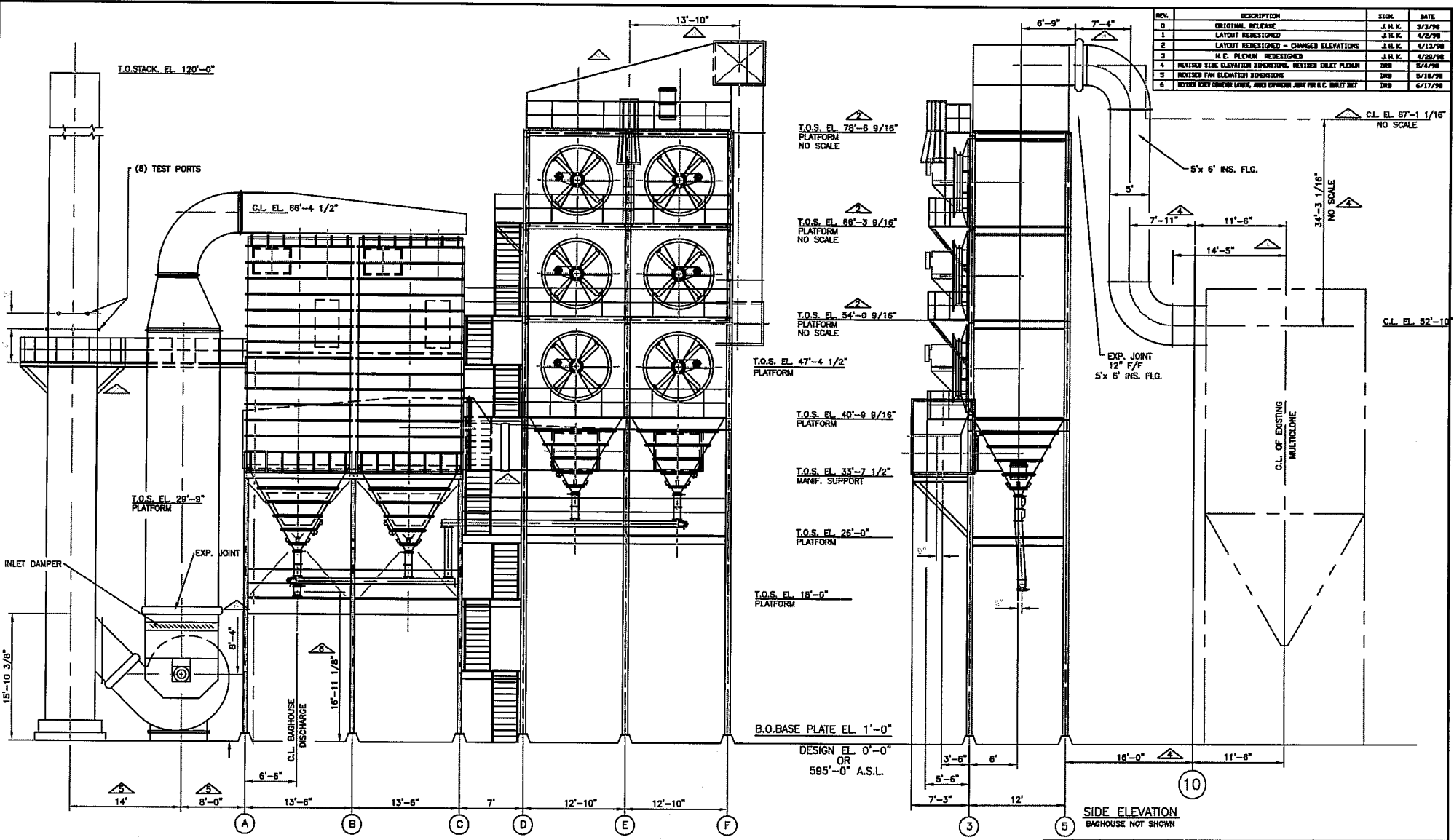
Amerex Industries
INCORPORATED
WOODSTOCK, GEORGIA 30188

EMEREX Industries

TITLE: EMISSION CONTROL SYSTEM - FRAMING PLAN AT T/S EL: 147'-4 1/2"

SCALE: -2" = 1'-0" & AS NOTED PLT 1:48

RELEASE DATE: _____ DRAWING No: **1698-422** REV. **▲**



FOR: CONTINENTAL CEMENT COMPANY, INC.
HANNIBAL, MO 63401
PURCHASE ORDER NUMBER:
PER AMEREX QUOTE: AP-941231 REV. 6 DATED: 12/9/97

TOTAL REQUIRED	PER. ASS. ITEM No.	WT. LBS.	DESCRIPTION	MATL./SIZE/DWG. No./VENDOR
			ASSEMBLY LIST	
FOR TOLERANCES REFER TO AMEREX SPEC. No. MFS.1	DRAWN: J.H.K. 3/3/98 CHECKED: R.M. APPROVED:		Amerex Industries INCORPORATED WOODSTOCK, GEORGIA 30188	AMEREX Industries
			TITLE GENERAL ARRANGEMENT EMISSION CONTROL SYSTEM FRONT & SIDE ELEVATIONS	
			SCALE: SCALE 3/16"=1'-0" PLOT 1=64	SHT. 1 OF 1
			RELEASE DATE: 3/3/98	DRAWING No. 1698-101 REV. 6

